



Eastern
Mining
Company

COMPANY PROFILE

Fujairah Trade Centre, Office 603
Hamad Bin Abdullah Street
PO Box 2889, Fujairah
United Arab Emirates

+971 9 238 7895

2025

www.easternmining.ae

Contents

- ◆ **Introduction, 3**
 - Our Mission, 3
 - Our Vision, 3
- ◆ **Our Commitment, 4**
 - Health, Safety & Environment, 4
 - Quality Policy, 4
 - Sustainability & Environmental Responsibility, 4
 - Ethics & Compliance, 4
- ◆ **Services, 5**
 - Marine Works, 5
 - Drilling & Blasting, 5
 - Quarry Operations & Material Supply, 5
 - Earthworks, 5
 - End-to-End Project Delivery, 6
- ◆ **Our Equipment, 7**
- ◆ **Organisation Structure & Key Personnel, 8**
- ◆ **Project Sheets, 9**
- ◆ **Certificates & Registrations, 10**

Introduction

Eastern Mining Company (EMC) is a specialist marine and earthworks contractor with a proven record in large-scale coastal infrastructure. In the last two years alone, EMC has placed over 40 million tonnes of material across sea reclamation, coastal protection, artificial islands, breakwaters and causeways, jetties and quay walls. Supported by in-house engineering and integrated logistics, we plan and execute end-to-end marine works with disciplined QHSE, cost control, and schedule certainty.

EMC is active in the Middle East region and has an in-depth understanding of the importance of delivering safe, sustainable, high-quality work that adapts to volatile environmental and market challenges.

We have extensive experience delivering projects across a range of sectors including marine infrastructure, coastal protection, land reclamation, ports, quarry operations and earthworks. We offer our international expertise and top-notch know-how.

Our Mission

Our mission is to deliver safe, high-quality and sustainable solutions across marine works, land reclamation, earthworks, quarry operations and drilling & blasting. We aim to exceed client expectations by combining regional knowledge, global expertise and in-house capability, while upholding our commitment to integrity, safety and environmental stewardship

Our Vision

To be recognised as a leading provider of marine and mining contracting services in the Middle East, delivering projects that shape infrastructure, support economic growth and respect environmental responsibility.



Our Commitment

At Eastern Mining Company, our operations are guided by policies that reflect our core values — safety, quality, sustainability and integrity. These policies are embedded into every level of our work, from management decisions to site operations.



Health, Safety & Environment

We prioritise the safety of our personnel, clients and the communities in which we operate.

- Maintain a zero-incident culture across all work sites
- Comply with UAE HSE regulations and international best practices
- Provide regular training and promote a proactive safety culture
- Minimise environmental impact through responsible practices and pollution prevention



Sustainability & Environmental Responsibility

As a company involved in resource-intensive sectors, EMC recognises its responsibility to protect and preserve the environment.

- Operate in accordance with ISO 14001:2015
- Promote efficient use of natural resources
- Reduce waste and support recycling where feasible
- Comply with local and international environmental regulations



Quality Policy

We are committed to delivering projects that meet the highest standards of quality and client satisfaction.

- Implement and maintain ISO 9001:2015 compliant systems
- Continuously improve processes, materials and outcomes
- Monitor performance through KPIs and internal audits
- Ensure timely delivery of services without compromising standards



Ethics & Compliance

We conduct our business with honesty and professionalism.

- Adhere to all applicable laws and regulations
- Foster a culture of transparency and accountability
- Respect clients, partners, employees and communities

Services

At Eastern Mining Company, we deliver fully integrated solutions for marine construction, land reclamation, earthworks, quarrying and drilling operations. With in-house equipment, experienced crews and a strong operational base in Fujairah, UAE, we deliver projects efficiently and with precision across the UAE and the wider Middle East.

Marine Works

EMC specialises in the execution of complex marine infrastructure works, including:

- Land reclamation and fill placement
- Coastal protection and rock revetments
- Breakwater and groyne construction
- Jetty and quay wall construction
- Harbour and port development

Our marine services are supported by expert planning, site management and logistics, ensuring smooth delivery in even the most challenging environments.

Drilling & Blasting

In collaboration with our sister company Mas Rock Engineering, EMC offers high-precision drilling and blasting services tailored for marine fill production, quarry development and controlled excavation.

We operate a fleet of Epiroc surface drilling rigs (T45 and T51) and are supported by a team of licensed blasting professionals from Europe and Asia. Our operations are compliant with the highest safety and environmental standards.

Quarry Operations & Material Supply

EMC owns and operates active quarry sites to support reclamation, marine fill and general construction activities. We produce and supply a wide range of rock materials including:

- 0–1000 kg general rock material
- 1–8 ton armour rock (Gabbro)

We also supply building sand, pebbles and aggregates on a wholesale basis. All material production is supported by our fleet of Komatsu HM400 dumper trucks and heavy-duty excavators (Komatsu PC500, CAT K350 and CAT 345), ensuring reliable supply to project sites.

Earthworks

At Eastern Mining, earthworks are a core part of our capability, supporting both marine and landbased infrastructure projects. We undertake a wide range of heavy civil operations, from initial ground preparation to complex grading and material handling works.

Our experience covers:

- Excavation and backfilling
- Site levelling and grading
- Cut-and-fill operations
- Bulk earthmoving for reclamation and infrastructure development
- Rock placement and engineered fill

Our fleet of heavy-duty excavators, articulated dump trucks and support equipment ensures the efficient execution of large-scale earthworks across challenging terrain. Whether supporting marine projects, preparing industrial zones or enabling future development platforms, EMC delivers precision-driven results with a focus on quality, stability and safety

Integrated Rocks and Aggregates Supply

Established in 2024, Prime Rocks LLC leads the Group's commercial supply and logistics, coordinating quarry output, inland haulage, port handling and marine shipping. In 2025, Prime Rocks acquired Atlantic Crusher (Fujairah), adding dedicated Heavy Gabbro and Limestone capacity aligned to EMC's marine works and MAS Rocks' drilling & blasting. Together, the companies deliver a seamless supply chain—from rock production to delivery—under multiple delivery terms, including Delivered to Site (UAE/GCC), FOB (e.g., Fujairah/Dibba) and CIF to named international ports. This integrated model strengthens quality control, schedule certainty and cost efficiency across reclamation, coastal protection and infrastructure programs.

End-to-End Project Delivery

By combining expertise in marine construction, drilling and blasting, and quarry operations, EMC delivers projects using its own equipment, personnel and supply chain. This integrated approach allows us to maintain cost efficiency, schedule control and consistent quality across all stages from rock extraction to coastal construction.



Our Equipment

At Eastern Mining Company, we operate a modern and versatile fleet of heavy machinery to support our core services in marine construction, land reclamation, earthworks, drilling and blasting, and quarry operations. Our in-house equipment gives us the flexibility to deliver large-scale projects efficiently and with minimal reliance on external resources.

Key Equipment Includes:



Komatsu HM400 Dumper Trucks

Heavy-duty articulated dump trucks ideal for high-volume material transport in quarrying, reclamation and marine fill operations. These machines provide excellent manoeuvrability, load stability and off-road capability.



Komatsu PC500 Excavators

Large, high-performance excavators suited for bulk earthworks, marine excavation and rock handling. The PC500 delivers power, reach and precision in challenging environments.



Caterpillar K350 and CAT 345 Excavators

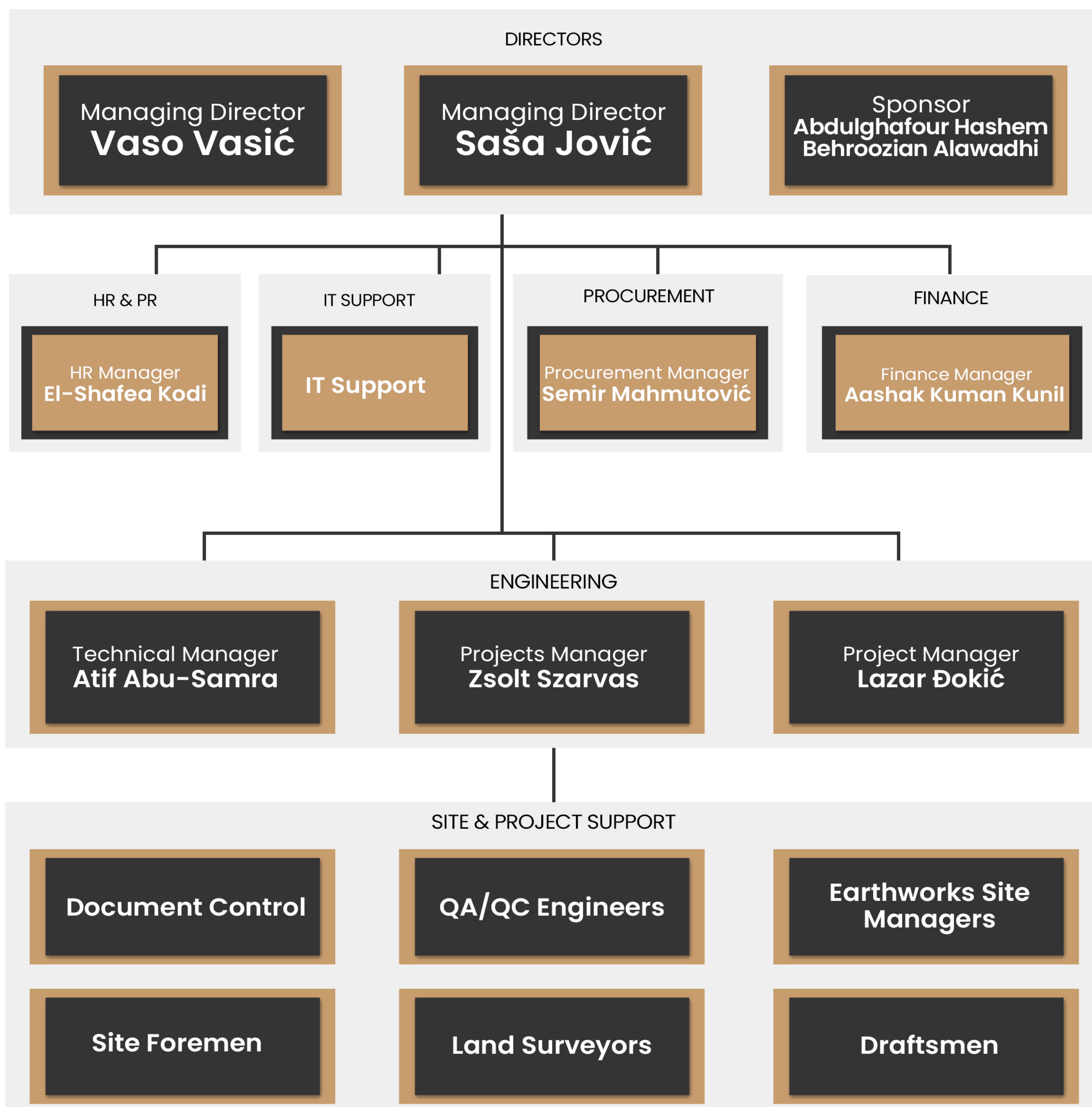
Robust and reliable excavators designed for excavation, trenching and heavy lifting. With exceptional digging force and hydraulic efficiency, they are essential to Eastern Mining's site preparation and reclamation works.



Epiroc Drilling Rigs (T45 and T51)

These top-hammer surface drilling rigs are tailored for quarry and blasting operations, offering high penetration rates and precision. Operated by experienced crews, they are integral to our in-house drilling and blasting capabilities.

Each machine in our fleet is operated by trained personnel and maintained to the highest standards to ensure efficiency, safety and reliability on site. This strong equipment base enables us to deliver turnkey solutions from quarry to coast.



Project Name	Location	Status	
Fujairah North Land Reclamation Project, Phase 5, SP-5C	Fujairah, UAE	Complete	AED 315 mil
FOIZ Reclamation Project (PoF)	Fujairah, UAE	On-going	AED 400 mil
Implementation of flood protection measures in separate areas of the Eastern and Northern coasts (2 earth/rock, 1 concrete core)	Fujairah, UAE	Complete	AED 115 mil
Coastal protection construction works, Halat Yady	Abu Dhabi, UAE	On-going	AED 20 mil

QHSE Certifications & Professional Standards

At Eastern Mining Company (EMC), we operate under an integrated QHSE management system certified to ISO 9001 (Quality), ISO 14001 (Environmental Management), and ISO 45001 (Occupational Health & Safety). These certifications are maintained through independent audits and a continuous-improvement cycle that embeds risk assessment, process control, and corrective actions into day-to-day operations.

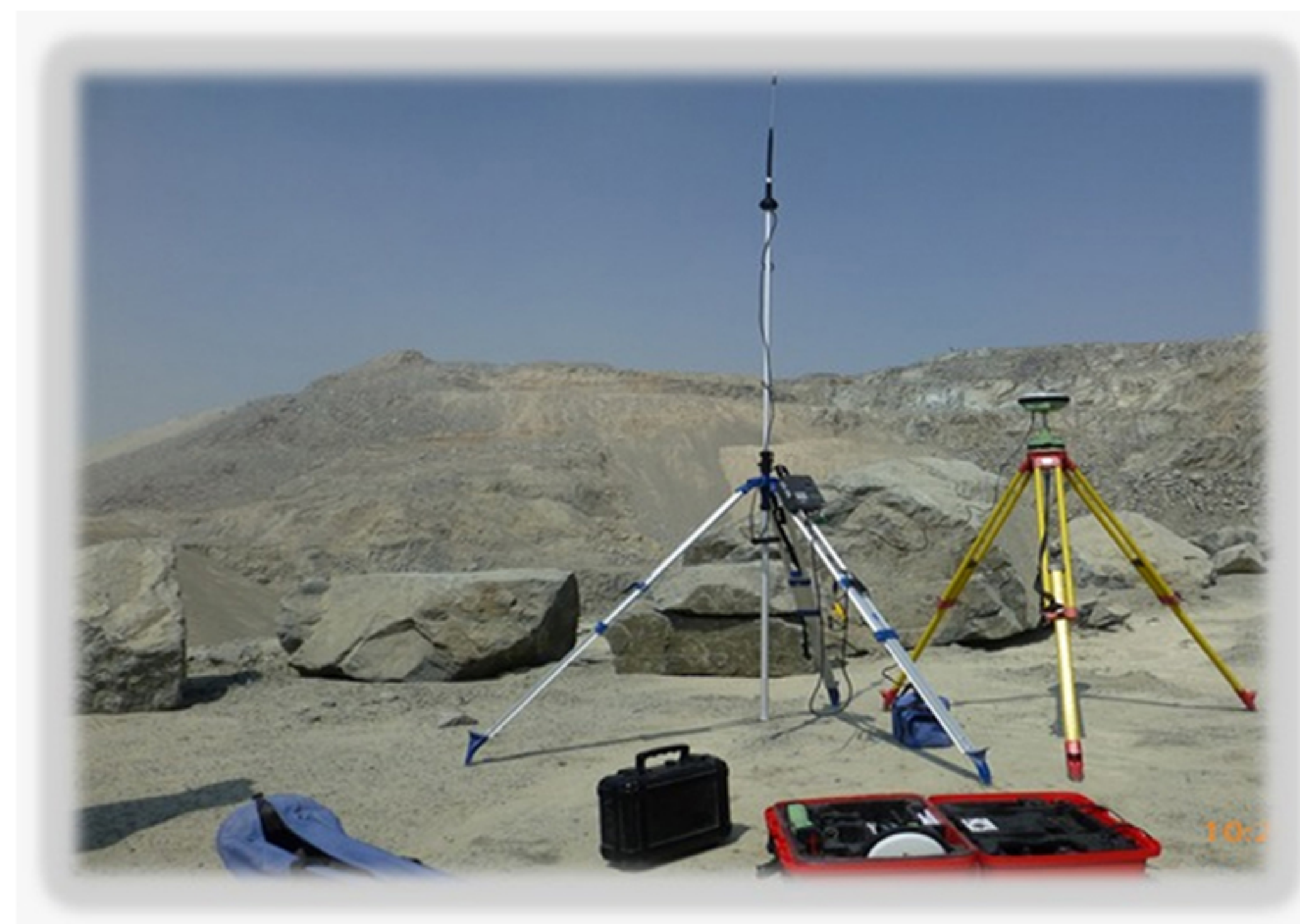
What this means for your project

- **Consistent quality:** documented ITPs, method statements, and inspection records ensure products meet specification—every time.
- **Safety first:** proactive hazard identification, toolbox talks, and permit-to-work regimes protect people and assets.
- **Environmental stewardship:** compliant dust, noise, and water controls with monitored KPIs and incident-free targets.
- **Full traceability:** batch/test certificates and end-to-end documentation from production to delivery.

Assurance & governance

- Annual external surveillance/recertification audits and regular internal audits.
- Management reviews with measurable objectives (quality, safety, environment).
- Competency-based training and contractor onboarding aligned to our QHSE standards.

EMC's certifications reflect a professional, disciplined operation designed to deliver compliant materials and safe, predictable execution on every project.





Eastern
Mining
Company